

SERIES 1001

ROLLING FIRE DOOR

General: 1001 Series Fireproof Metal Curtains, as supplied by Asselin Industriel, consist of flat or curved ASTM A-653 galvanized steel plates, 69 mm high, 22-gauge, nested in one another. The steel ends are assembled using rivets. The lower door leaf is composed of two angles of 51 x 51 x 5mm minimum.

Balancing mechanism: the balancing mechanism consists of coil springs of 10,000 cycles mounted on shaped anchors supported by a solid cold-rolled steel shaft enclosed in a steel cylinder. All springs are attached to the same tensioning shaft and held in place by the same voltage regulator that is easily accessible.

Guiding rails: The guide rails are made of steel angles of the appropriate thickness forming a slot deep enough to hold the curtain in the rails. The support plates are made of steel, of the thickness appropriate to the dimensions of the doors, finish black primary layer.

Release Mechanism: The release mechanism is a cable and fuse assembly that retains the priming releasing levers in place on each end support plate. When the cable loosens, the levers fall, causing a partial rotation of the adjustment wheel and causing the curtain to descend. The balance regulator controls the descent of the curtain by means of an exhaust mechanism.

Insulation: Insulation is possible if ask

Weather-strip : Side weather stripping is possible and brush top overhead seal

Operation : Metallic roll-up shutters work:

Manually push / pull (push / pull)
Manually with a chain winch or
Electrically with an electric operator.

Requirements: Metal curtains with a firewall are equipped with an automatic closure device with fuse links in accordance with UL, C-UL standard having a fire resistance of 4 hours, 3 hours, 1- ½ hours or ¾ hours.

Finish: The finish curtain is galvanized or paint gray or as RAL chart. The track are prime black. The cover hood is galvanized or prime gray.

Waranty : The warranty for the product is valid for a period of twelve months from the date of installation by or supervised by our personnel.



Slat Style Options



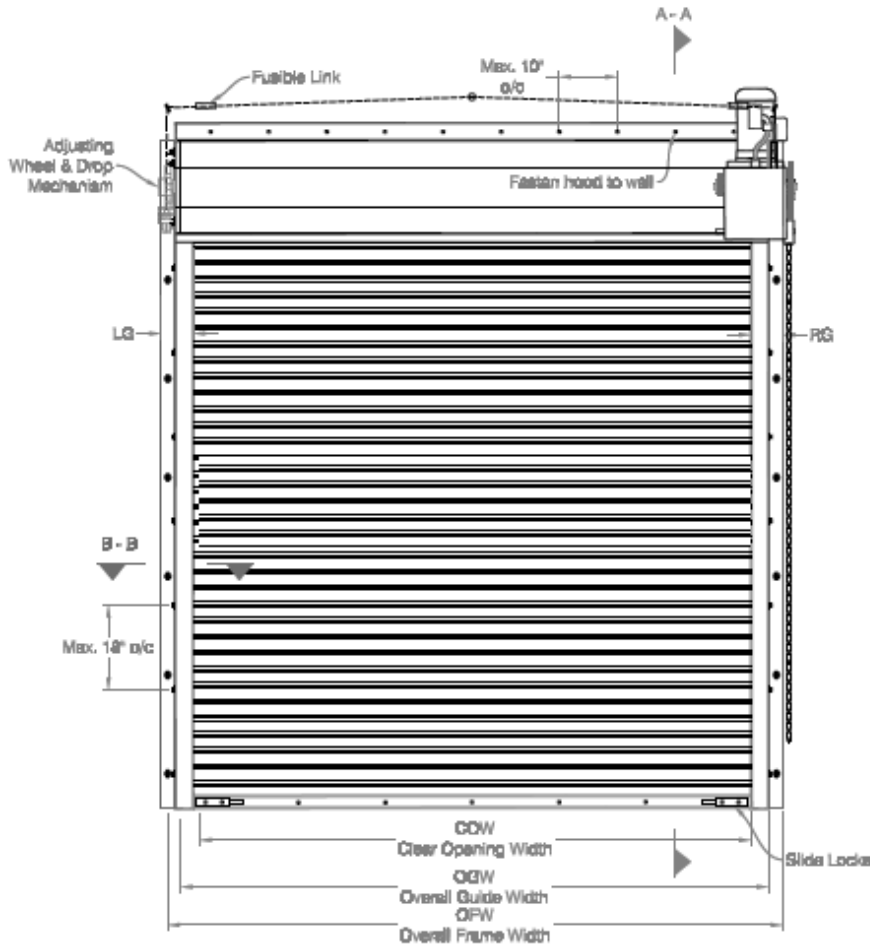
Flat slats.
The most architecturally pleasing slat profile.



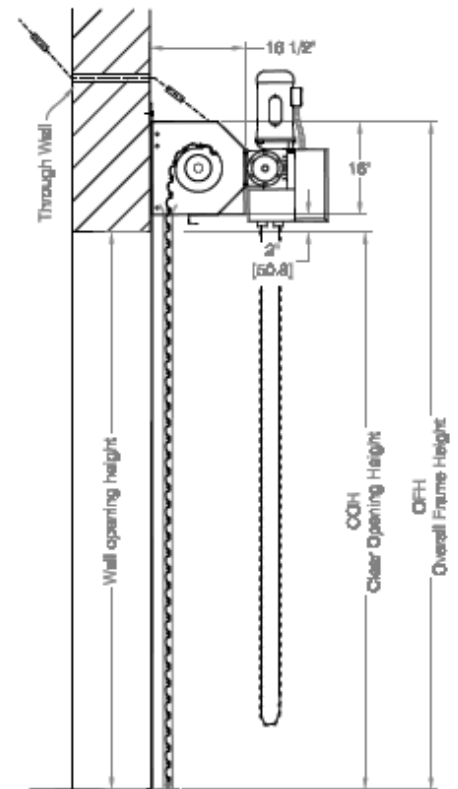
Large contour slats.
Available in virtually unlimited widths, large contour slats are typically specified for larger-sized openings.



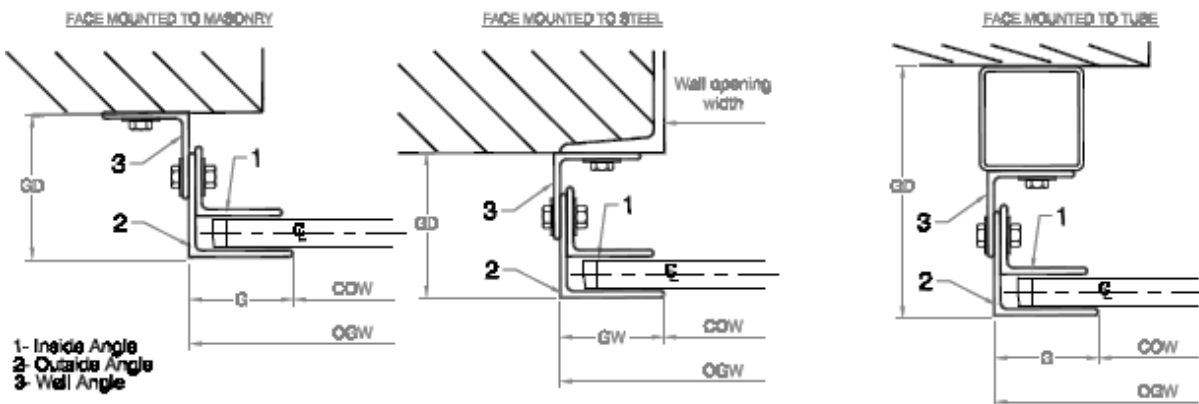
Small contour slats.
An excellent choice for smaller opening widths, small contour slats are the best value for opening sizes up to 14' x 24'.



COIL SIDE ELEVATION



VERTICAL SECTION A - A



GUIDE SECTION B - B