

DURACOIL™



DuraCoil, gray, with flat steel slats

R U G G E D

D U R A B L E

R E L I A B L E



1660 Cité des Jeunes
Les Cèdres, Québec
Canada, J7T 1K9
asselininc@gmail.com
www.asselinindustriel.com
www.portesdorion.com
450-200-0633 Vaudreuil-Soulangue
514-453-5120 Montréal

DURACOIL™

ROLLING SERVICE DOORS

Rugged DuraCoil service doors—with aluminum, steel or stainless steel slats—are made to last. When you want the best, specify DuraCoil.

Flat Slat (FF)

Offers full visual access, multiple glazing options and windload resistance in a rolling steel door designed to fit in a variety of opening sizes.

Perforated Flat Slat (FP)

Engineered for security, DuraCoil Perforated Flat Slat doors provide maximum ventilation and visibility.

Insulated Flat Slat (IF)

Available in several sizes, DuraCoil Insulated Flat Slat doors offer thermal efficiency, combined with superior visual access, glazing options and windload resistance.

Large-C Slat (LC)

Designed to withstand heavy use, DuraCoil Large-C Slat doors provide optimum security and windload resistance while accommodating most opening sizes.

Light-Duty Flat Slat (LFF)

Provides the security of a rolling steel door for projects with limited budgets.

Small-C Slat (SC)

DuraCoil Small-C Slat doors offer optimum security and windload resistance in a rolling steel door built to withstand the demands of high-traffic entryways.

MODEL	Guides	Slat Profile	Slat Material (Thickness)	Maximum Width	Color/Finish
FF	Structural Steel Angles	Flat	Steel 24, 22, 20, 18 gauge	40'	Gray, Tan, or ArmorBrite Painted Galvanized Finish
			Stainless Steel 24, 20 gauge	30'	White Painted (24, 22, 20 gauge)
			Aluminum 18, 16 gauge	30'	#4 Finish Clear Anodize or Bronze Anodize
FP	Structural Steel Angles	Perforated Flat	Steel 22, 20 gauge	30'	Gray or ArmorBrite Painted
			Aluminum 18, 16 gauge	30'	Clear Anodize or Bronze Anodize
IF	Structural Steel Angles	Insulated Flat	Stainless Steel 22, 20 gauge	32'	#4 Finish
			Steel 24, 22, 20, 18 gauge	40'	Gray, Tan or ArmorBrite Painted Galvanized Finish
			Aluminum 18, 16 gauge	30'	White Painted (24, 22, 20 gauge) Clear Anodize or Bronze Anodize
SC	Structural Steel Angles	Small Curve	Steel 22, 20 gauge	16'	Gray or ArmorBrite Painted
LC	Structural Steel Angles	Large Curve	Steel 22, 20, 18 gauge	40'	Gray or ArmorBrite Painted
LFF	Roll-Formed	Light-Duty Flat	Steel 24 gauge	14'	Gray or Tan Painted

NOTE Contact factory for special sizes.

WARRANTY DuraCoil service doors carry a 1-year limited warranty. See your local Raynor Dealer for complete details.

Meeting Commercial Door Needs for More Than 60 Years

Every DuraCoil door is built for superior performance and includes the features listed below. For additional options, please see the inside pages.



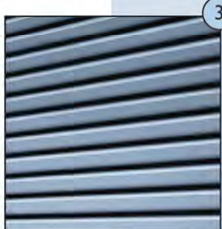
1. Curtain hood.

DuraCoil service doors feature a full-width, 24-gauge steel hood to protect your investment. Optional on DuraCoil model LFF.



2. Counterbalance system.

A smooth-running, torsion-spring-operated system is packed into each barrel assembly. Industrial head plates and bearings provide long cycle life.



3. Curtain.

Each DuraCoil curtain is assembled with durable, heavy-gauge slats in a variety of materials and gauges.



4. *Guides and end locks.

Rugged structural steel angle guides provide maximum support for curtain slats. Zinc-plated, malleable cast-iron end locks prevent lateral movement of the curtain slats.



5. Bottom bar.

Curtain bottoms are structurally reinforced with a minimum of two steel angles for maximum durability. A bottom astragal is included on all doors.



6. Security locks.

To keep your building secure, manually-operated DuraCoil doors are equipped with slide locks.

*DuraCoil model LFF doors are supplied with roll-formed guides and stamped metal end locks.

APPLICATION GUIDE

	Flat Slat	Perforated Flat Slat	Insulated Flat Slat	Large-C Slat	Light-Duty Flat Slat	Small-C Slat
Agricultural Buildings	●	○	●	●	○	○
Cafeteria/Concessions	●	●				
Car Wash/Corrosive Environments	●		●			
Commercial/Multi-Tenant	●	○	●	●	○	●
Fire Station/Ambulance	○		○	○		
High Security	●	●	●	●		○
Large Opening Size	●		●	●		
Mining, Pulp & Paper	●	○	●	●		○
Service Station	●		●	●	○	●
Shopping Mall/Retail	●	○	●	●	○	●
Thermal Environments			●			
Transit Facility/Truck Terminal	●	○	●	●	○	●
Underground Parking	●	●		●		●
Noninsulated Storage	●			●	●	●
Warehouse/Manufacturing	●	○	●	●	○	●

● Best ○ Good ● Applicable

MODEL OPTIONS AND UPGRADES

① 187 ArmorBrite™ colors.

Choose your color! Nearly every Raynor rolling door component (curtain slats, bottom bars, guides, hoods and head plates) can be powdercoated in any of 187 colors for an attractive appearance and exceptional durability.

② High-cycle applications.

For years of reliable operation in heavy-use applications such as multi-tenant parking facilities, choose high-cycle torsion springs.

③ Head plate cover.

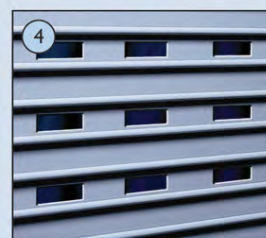
Head plate covers are available for an attractive, finished appearance and help to protect your investment by keeping out dust and grime.

④ Vision panels.

For light transmission and visibility, choose 4" x 1" acrylic vision slots for flat and insulated flat curtain slats. Fenestrated curtains with open 4" x 1" slots are also available for flat slat curtains only.

⑤ Pedestrian doors.

Pedestrian doors are designed for convenient entry and to help minimize energy loss.



SLAT STYLE OPTIONS



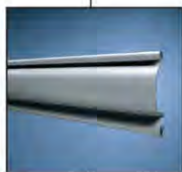
Flat slats.

The most architecturally pleasing slat profile, flat slats are ideal when weatherseal is used.



Flat insulated slats.

Designed for any application demanding greater thermal efficiency.



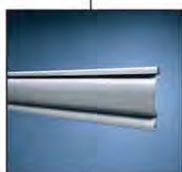
Large contour slats.

Available in virtually unlimited widths, large contour slats are typically specified for larger-sized openings.



Flat perforated slats.

Engineered for applications where airflow, visibility and security are desired.



Small contour slats.

An excellent choice for smaller opening widths, small contour slats are the best value for opening sizes up to 14' x 14'.



Light-Duty Flat Slat.

Ideal for projects with a limited budget.

COMMERCIAL OPERATORS



ControlHoist



PowerHoist



Commercial Operators

Raynor ControlHoist™ (with solid state logic board control) and PowerHoist™ operators are available in a variety of motor, voltage, and phase combinations for any commercial or industrial application. Contact your local Raynor Authorized Dealer to select the operator and accessories that are suited for your door's size and usage.

ENERGY- SAVING OPTIONS



Hood weatherseal.

A reinforced neoprene sheet rests on the curtain to minimize air infiltration. A header brush seal is also available.



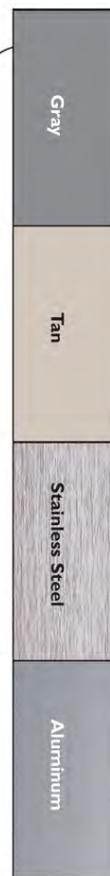
Vinyl guide seal.

A vinyl extrusion decreases energy costs and reduces air infiltration by sealing the side of the door when closed.



Brush guide seal.

A brush-type seal increases the energy efficiency of curved slat doors.



For DuraCoil door color options, please refer to the chart above.

Exclusively Distributed By:



1660 Cité des Jeunes
Les Cèdres, Québec
Canada, J7T 1K9
asselininc@gmail.com
www.asselinindustriel.com
www.portesdorion.com
450-200-0633 Vaudreuil-Soulange
514-453-5120 Montréal



This information was as complete and factual as possible at the time it was printed. We do, however, reserve the right to make changes in product specifications and availability without notice. Features and options may be different in countries other than the United States. Product colors have been reproduced as well as possible with present commercial printing processes. For absolute accuracy in color matching, use actual product samples.