

**FIRECOIL™**



FireCoil

S A F E T Y

S E C U R I T Y



1660 Cité des Jeunes  
 Les Cèdres, Québec  
 Canada, J7T 1K9  
[asselininc@gmail.com](mailto:asselininc@gmail.com)  
[www.asselinindustriel.com](http://www.asselinindustriel.com)  
[www.portesdorion.com](http://www.portesdorion.com)  
 450-200-0633 Vaudreuil-Soulange  
 514-453-5120 Montréal

VISIT US AT: [WWW.RAYNOR.COM](http://WWW.RAYNOR.COM)  
 CALL: 800-4-RAYNOR

# FIRECOIL™

## FIRE-RATED ROLLING DOORS

Where safety and fire protection are crucial, choose FireCoil. Raynor FireCoil doors are the standard for facilities that require a listed fire door in a rated fire wall. FireCoil doors are provided with fusible links that automatically release to close the door at 165°F. The door's descent can also be triggered by smoke and heat detectors, a building's alarm system, or solid-state release devices. FireCoil doors are UL, C-UL and CSFM-labeled.

### FireCoil

With a four-hour rating and 18-gauge steel slats, this model is the best choice for optimum fire protection and maximum security.

This full-featured, competitively priced product is designed to exceed industry guidelines with a UL four-hour rating. Use Raynor FireHoist™ operators for easy reset after fire alarm.



FireCoil, Gray, with small contour steel slats

MODEL	Guides	Slat Profile	Slat Material (Thickness)	Fire Ratings	Approvals	Maximum Width	Operation	Color/Finish
Flat Slat (UF)	Structural Steel Angles	Flat	Steel 22, 20, 18 gauge	4-Hour, 3-Hour, 1 1/2-Hour, 3/4-Hour	UL, C-UL, CSFM ISO-3008, BS-476, FM, MEA	30'	Manual, Chain, QuickTest, Motor	Gray, Tan, or ArmorBrite Painted Galvanized Finish
			Stainless Steel 22, 20 gauge	1 1/2-Hour, 3/4-Hour		19'-6"		White Painted (22/20 gauge)
			Steel 24 gauge		UL, C-UL, CSFM, MEA	10'		#4 Finish
Insulated Flat Slat (UI)	Structural Steel Angles	Flat	Steel 24, 22, 20, 18 gauge	4-Hour, 3-Hour, 1 1/2-Hour, 3/4-Hour	UL, C-UL, CSFM, MEA	30'	Chain Hoist with Release, Motor	Gray, Tan, or ArmorBrite Painted Galvanized Finish White Painted (24/22/20 gauge)
Small-C Slat (US)	Structural Steel Angles	Curve	Steel 22, 20 gauge	4-Hour, 3-Hour, 1 1/2-Hour, 3/4-Hour	UL, C-UL, CSFM, ISO-3008, BS-476, FM, MEA	14'	Manual, Chain, QuickTest, Motor	Gray or ArmorBrite Painted
Large-C Slat (LL)	Structural Steel Angles	Curve	Steel 22, 20, 18 gauge	4-Hour, 3-Hour, 1 1/2-Hour, 3/4-Hour	UL, C-UL, CSFM, ISO-3008, BS-476, FM, MEA	30'	Manual, Chain, QuickTest, Motor	Gray or ArmorBrite Painted



## QuickTest™ Fire Door Release System

Save time and money by testing and quickly resetting your fire door with the Raynor QuickTest Fire Door Release System. With this system, you can perform the required drop test and reset your fire door from the floor. Because no spring tension is released, resetting the system will not require a professional service call.

### Features:

- Fusible link or other release devices
- Easy test and easy reset
- Quicker and easier installation than traditional systems
- One size fits all applications
- Combination governor/Chain Hoist unit means fewer components
- Left- or right-hand mount
- Adjustment clutch nut provides superior balance
- Adjustable flyweights on the governor assembly ensure a safe door descent speed
- One-year warranty

*Note: The QuickTest Fire Door Release System can only be used with a Raynor fire door. The QuickTest System cannot be used with any motor-operated fire doors.*



Chain Hoist with Release allows manual operation of door.



Standard QuickTest release mechanism



Optional QuickTest release mechanism

### QuickTest with Release and Chain Hoist with Release Specifications:

- QuickTest with Release is available for UF, US, and LL FireCoil models; Chain Hoist with Release is available for the FireCoil UI model.
- Drop speed is adjustable from 6 to 12 inches per second
- No additional headroom required
- No additional sideroom required
- Minimum 10.7" additional backroom required



## FIREHOIST™ FDC

Raynor FireHoist FDC operators offer 1/2HP and 1HP helical gear drive options, providing an integrated fire door control system. Featuring a high efficiency, in-line gear reducer and horizontal front of coil installation, the FireHoist in-line offering is versatile and able to withstand the most rigorous environments. If a Raynor-approved monitored reversing device is not connected, the operator will require constant pressure on the close button to close the door.

### Standard Features:

- Time delayed automatic closing
- Auto-reset Overload protection
- Monitored battery back-up
- Low battery warning
- Programmable closing function selections
- Keyed test station
- Electronic thermal sensors (field installed)
- Continuous duty motor
- Detector/alarm input
- Adjustable linear driven limit switches
- 24-volt control circuit
- 3-button open/close/stop controls
- NEMA 1 enclosures
- UL listed
- Monitored and unmonitored reversing devices available



## FIREHOIST™ FDCL

Raynor FireHoist FDCL operators provide a 1/2 HP, spur-gear drive, operator and fire door system. Featuring a high efficiency, spur-gear reducer and horizontal front of coil installation, the FireHoist in-line offering is versatile, and able to withstand the most rigorous environments (100 sq. ft. maximum). If a Raynor-approved monitored reversing device is not connected, the operator will require constant pressure on the close button to close the door.

### Standard Features:

- Time delayed automatic closing
- Auto-reset Overload protection
- Monitored battery back-up
- Low battery warning
- Programmable closing function selections
- Keyed test station
- Electronic thermal sensors (field installed)
- Continuous duty motor
- Detector/alarm input
- Adjustable linear driven limit switches
- 24-volt control circuit
- 3-button open/close/stop controls
- NEMA 1 enclosures
- UL listed
- Monitored and unmonitored reversing devices available



## FIREHOIST™ FSE

Raynor FireHoist FSE operators offer 1/3HP, 1/2HP, 3/4HP, 1-1/2HP, and 2HP, planetary reduction gear drive options, providing an integrated fire door control system. Featuring a high efficiency gear reducer and horizontal front of coil installation the FireHoist in-line offering is versatile, and able to withstand the most rigorous environments. FSE models are also available in 1/3HP, 1/2HP, 3/4HP, 1-1/2HP retro-fit options, to accommodate existing fire doors by eliminating all the components that typically fail. If a Raynor-approved monitored reversing device is not connected, the operator will require constant pressure on the close button to close the door.

### Standard Features:

- UL Listed
- NEMA 1 Enclosure
- 3-button open/close/stop control
- 24-volt control circuit
- Time delayed automatic closing
- Detector/alarm input
- Adjustable linear driven limit switches
- Monitored and unmonitored reversing devices available

## FIRECOIL FEATURES

Every FireCoil door is built for superior performance and includes the features listed here. For additional options, see your Raynor dealer.



### Fusible links.

Automatic door closure is initiated by one of three fusible links that melts at 165° Fahrenheit.



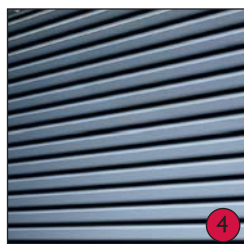
### Spring-loaded governor.

Incorporates corrosion-resistant components to assure a smooth, controlled descent. Protected by a steel head plate cover (cover not shown). Not available on UI model.



### Counterbalance system.

A torsion-spring-operated system, enclosed in a structural steel barrel, effectively counterbalances the door for a minimum of 10,000 cycles.



### Curtain.

All FireCoil door curtains are constructed with heavy-duty steel slats. See below for a complete list of slat styles.



### Bottom bar.

Curtain bottoms are reinforced with a minimum of two steel angles for maximum durability. A bottom astragal is included on all motor-operated doors.



### Guides and end locks.

Structural steel angle guides provide added support for curtain slats. Zinc-plated, malleable cast-iron end locks prevent lateral movement of the curtain slats.



### \*Curtain hood.

For maximum structural rigidity, curtain hoods feature rolled edges and are formed from 24-gauge, hot-dipped galvanized steel.

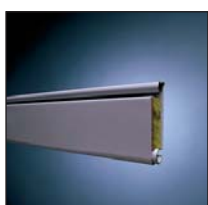
\* FireCoil hoods include a flame baffle that is activated by a fusible link. Standard on Factory Mutual-approved doors. Optional on UL-approved doors.

## SLAT STYLE OPTIONS



### Flat slats (UF).

The most architecturally pleasing slat profile.



### Insulated flat slats (UI).

Designed for any application demanding greater thermal efficiency.



### Large contour slats (LL).

Available in virtually unlimited widths, large contour slats are typically specified for larger-sized openings.



### Small contour slats (US).

An excellent choice for smaller opening widths, small contour slats are the best value for opening sizes up to 14' x 24'.

**1 187 ArmorBrite™ colors.**

Choose your color! Nearly every Raynor fire door component (curtain slats, bottom bars, guides, hoods and head plates) can be powdercoated in any of 187 colors for an attractive appearance and exceptional durability.

**2 Locks.**

In applications where control and access are important, choose from a variety of locking options to help keep your building secure. Locks come in either cylinder or slide-bolt (shown) variations. Slide-bolt locks are standard on push-up operation.

**3 Smoke control.**

A guide with brush seal (shown) and header seal reduce smoke damage.

QuickTest and FireHoist options are detailed in the inside of this brochure.



Raynor offers a full line of sectional, rolling, fire and traffic doors as well as security grilles. See your Raynor Dealer or visit [www.raynor.com](http://www.raynor.com) for more information.



1660 Cité des Jeunes  
 Les Cèdres, Québec  
 Canada, J7T 1K9  
[asselininc@gmail.com](mailto:asselininc@gmail.com)  
[www.asselinindustriel.com](http://www.asselinindustriel.com)  
[www.portesdorion.com](http://www.portesdorion.com)  
 450-200-0633 Vaudreuil-Soulange  
 514-453-5120 Montréal