

# SPIRAL<sup>®</sup>

H I G H P E R F O R M A N C E R I G I D R O L L I N G D O O R

## High Security, High Speed, with Architectural Style - All in One Door.

With an opening speed of up to 60 inches per second, the Spiral door offers the speed you need for high-traffic situations. Rigid, aluminum slat construction eliminates any need for a second overnight security door.

Crisp lines give the Spiral door a stylish look that's great for all kinds of commercial, institutional, as well as industrial applications. Because its anodized aluminum will not corrode, you can count on that look to last for many years under even the worst weather conditions.

**High Security** - Rigid, aluminum slat construction and optional, integral locking system provides unparalleled security.

**Fast** - Opens at up to 60 inches per second for improved traffic flow.

**Whisper Quiet** - The unique Spiral roll-up design features no metal-to-metal contact, therefore offering whisper quiet operations.

**High Performance** - The variable speed AC Drive system, with soft acceleration and deceleration, smooths out routine stops and starts, virtually eliminating the clunking gear engagements associated with typical overhead door operation.

**Energy Efficient and Tight Seal** - Aluminum slats, along with a durable rubber membrane which covers their aluminum connecting hinges, provide a 100% seal against dust pollution, drafts, and inclement weather. Optional insulation simply adds to the energy savings.



**RYTEC**  
CORPORATION

*Driving The Door Industry.<sup>SM</sup>*

# SPIRAL®

HIGH PERFORMANCE RIGID ROLLING DOOR

**Specifications:** Subject to change

**Model:** Rytec® Spiral® Door

**Standard Size:** Up to 26 feet 2 inches wide by 22 feet 11 inches high.

**Door Panel:** Double walled aluminum slats are 6 inches high by 1-9/16 inches thick (thickness varies depending on door size). Integral rubber weatherseal between each panel. Optional insulation and clear polycarbonate windows.

**Side Frames:** Galvanized steel side frames with full-height weatherseal on both sides to seal against door panel. Dual electric photo eyes are standard. Optional stainless steel package available.

**Counterbalance:** Up to six extension springs in each side column, depending on the size of the door. The springs assist the motor in opening the door. Mechanical egress lever on the side column allows door to be opened in the event of a power failure.

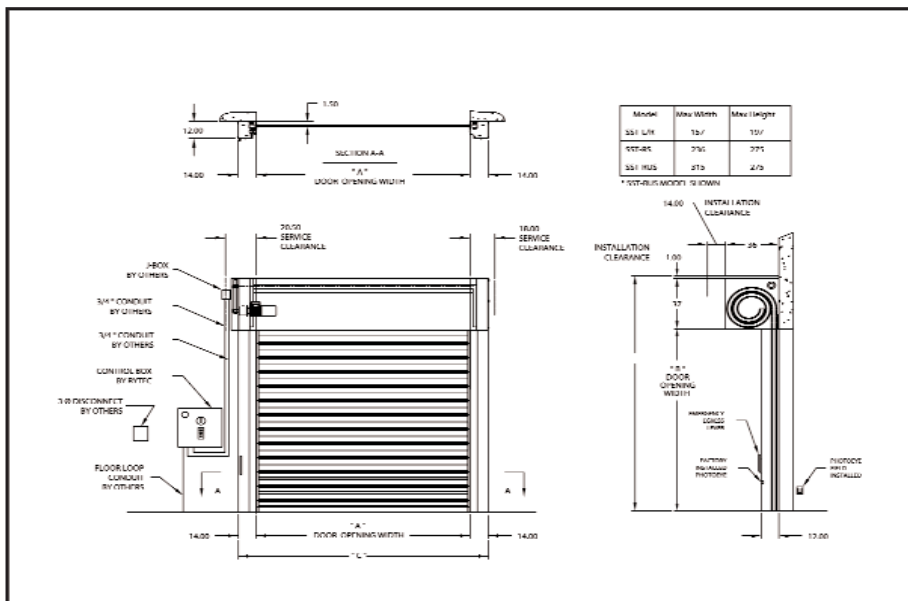
**Bottom Bar:** Extruded aluminum bottom bar with reliable, electric reversing edge.

**Drive System:** Three-phase, variable speed AC Drive provides soft acceleration and deceleration. Independent opening and closing speeds provide flexibility to accommodate any application.

**Travel Speed:** Opens at up to 60 inches per second.

**Electrical Controls:** System 3® controller is housed in a NEMA 4 rated enclosure with factory set parameters. Self-diagnostic features and a two-line, 32-character LCD display in English, Spanish or French provide quick and straightforward installation and control adjustments. Programmable inputs and outputs accommodate special control requirements without the need for additional electrical components.

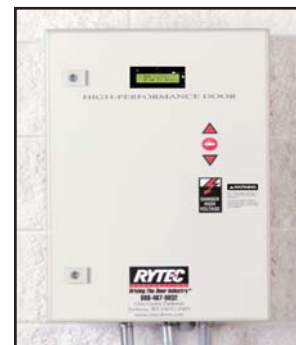
**Warranty:** One-year limited warranty on materials and workmanship.



**Rubber Weatherseal**  
Integral rubber weatherseal between anodized aluminum slats is replaceable for easy maintenance.



**Architectural Styling**  
Available in either standard anodized aluminum or optional custom paint colors. Shown with optional window slats.



**System 3 Controller**  
Makes programming and troubleshooting easier, more flexible and more precise than ever.



**Compact Motor**  
AC Drive motor is compact and variable speed, with soft acceleration and deceleration for smooth starts and stops.

**Spiral Construction**  
Spiral track and rollers permit quiet and low maintenance operation.



One Cedar Parkway  
Jackson, WI 53037-0403  
Phone: 262-677-9046  
Fax: 262-677-2058  
Toll Free: 888-GO-RYTEC  
Email: info@rytecdoors.com  
Web: www.rytecdoors.com